

# Co-Packing Solutions



High Quality Pet Care Products  
Gary Thomas



4105



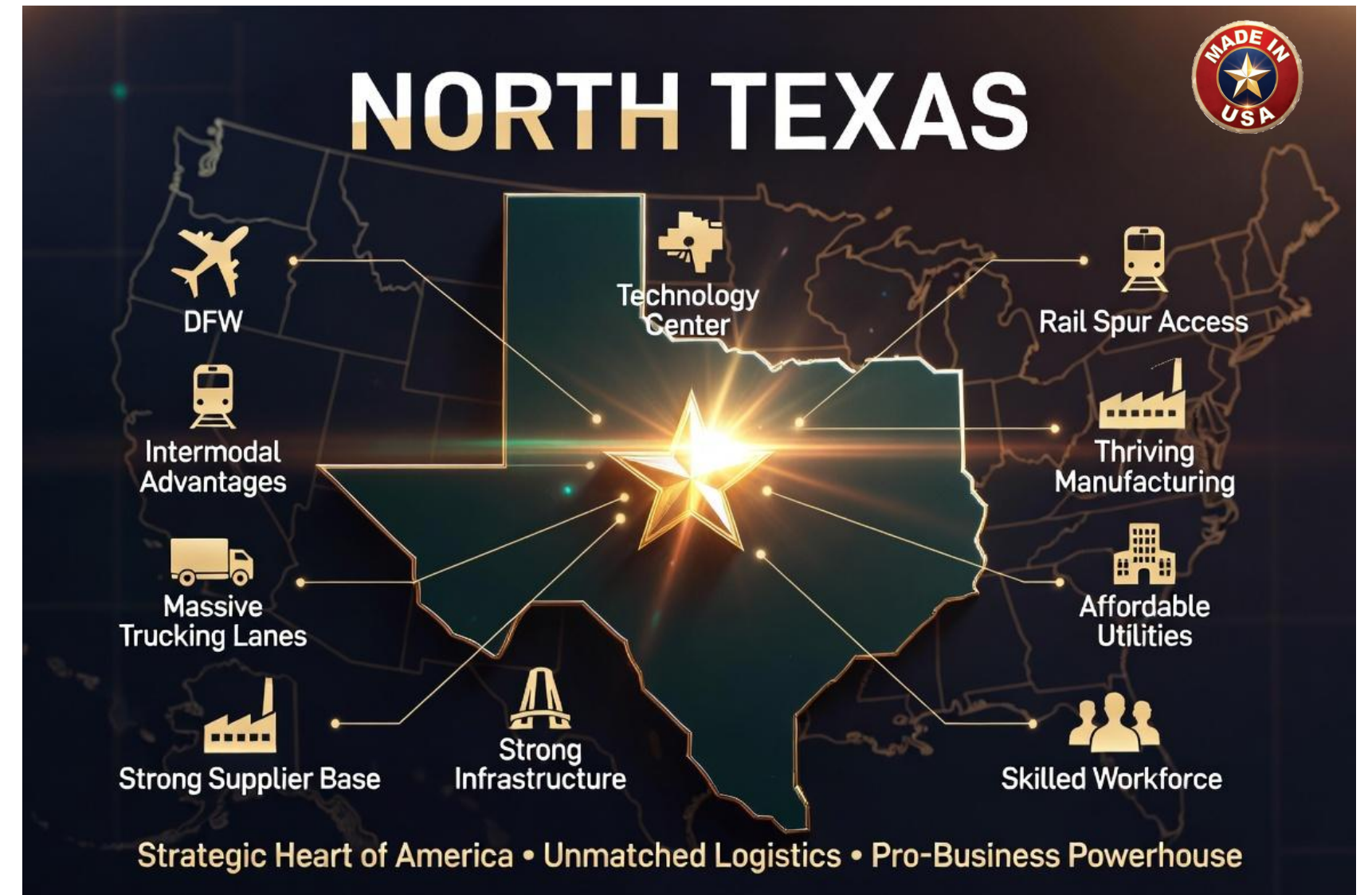
# Facilities

Our state-of-the-art manufacturing facilities are equipped with the latest technology to ensure efficient co-packing processes. With a focus on **innovation and quality**, we maintain rigorous standards to meet diverse client needs while maximizing production capacity and minimizing turnaround times for all projects.

# Desirable Location

## Located in **North Texas**

Nestled at the heart of the U.S., DFW provides two-day truck/rail access to 98% of Americans and 3.5-hour air access to major markets. Its **world-class infrastructure** of interstates, Class I railroads, DFW Airport, and Dallas Inland Port delivers seamless supply chains. With no state income tax, **low costs**, equipment tax exemptions, incentives, and a large skilled workforce, it's the top choice for **Co-Packing** in aerospace, electronics, automotive, advanced tech, supplements, and energy. Here, companies scale faster, innovate bolder, and compete stronger.



# Flexible Packaging

## Innovative Solutions for Diverse Needs

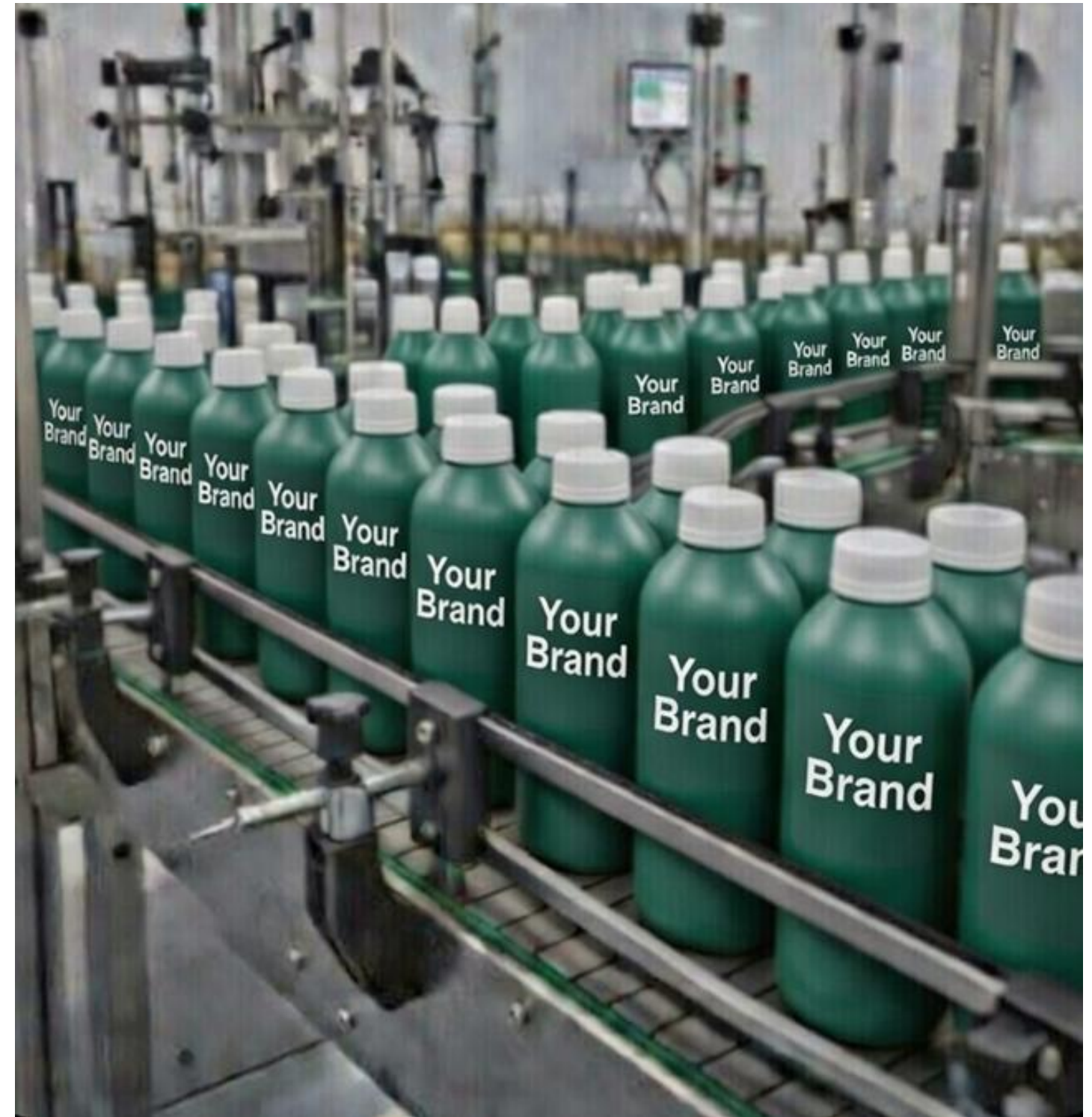
Our co-packing capabilities provide **tailored flexible packaging** solutions to meet a variety of product requirements, ensuring efficiency and quality for every client project.

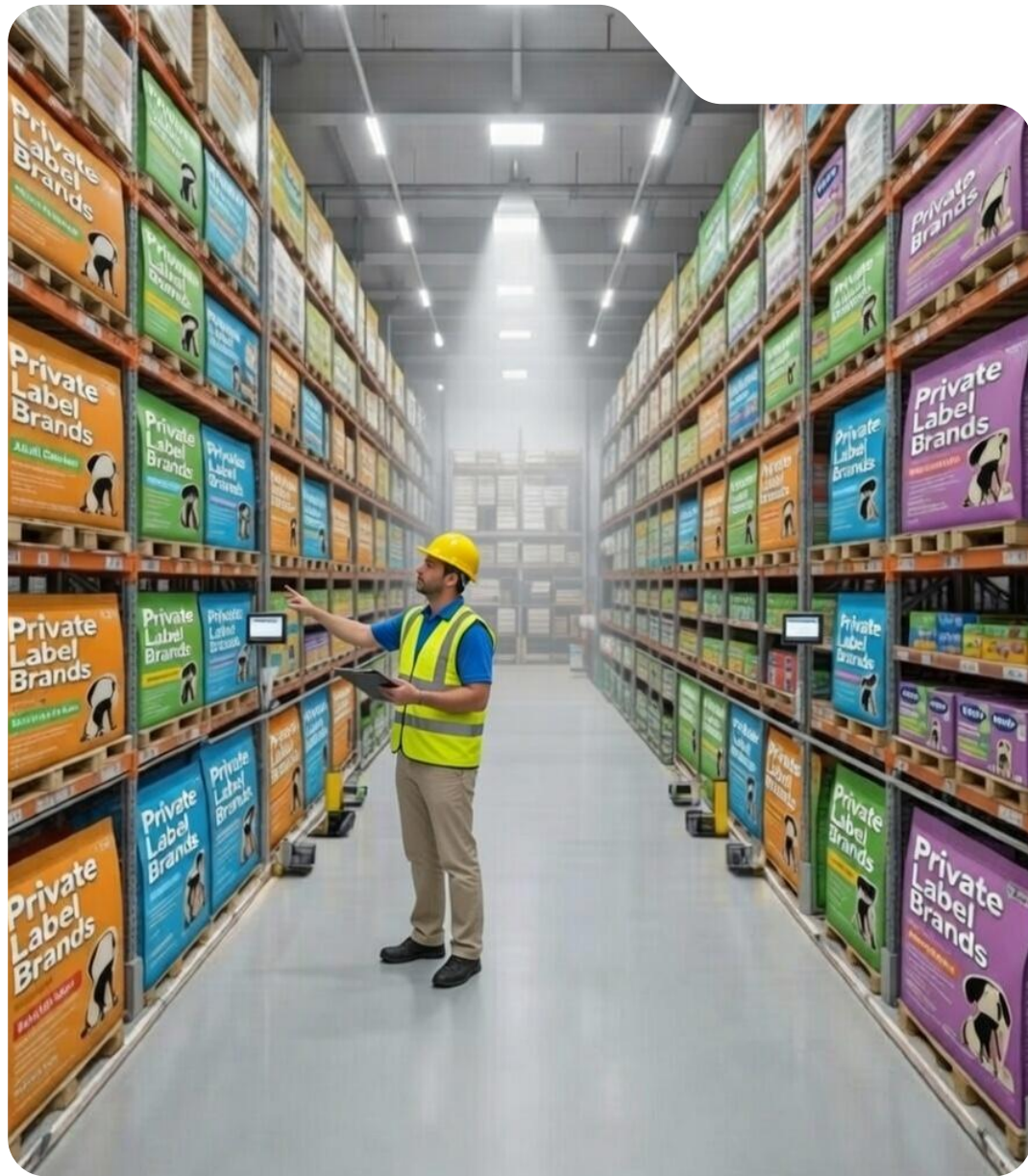


# Bottling, Sprays & Wipes

## Expert Solutions for all your needs

Our state-of-the-art bottling and wipe lines ensure efficiency and quality, providing **tailored solutions** that meet diverse production needs for craft beverages and large-scale distribution.





**150,000 Units**

Processed Daily



**95% Efficiencies**

Operational Excellence



**40+ Million Units**

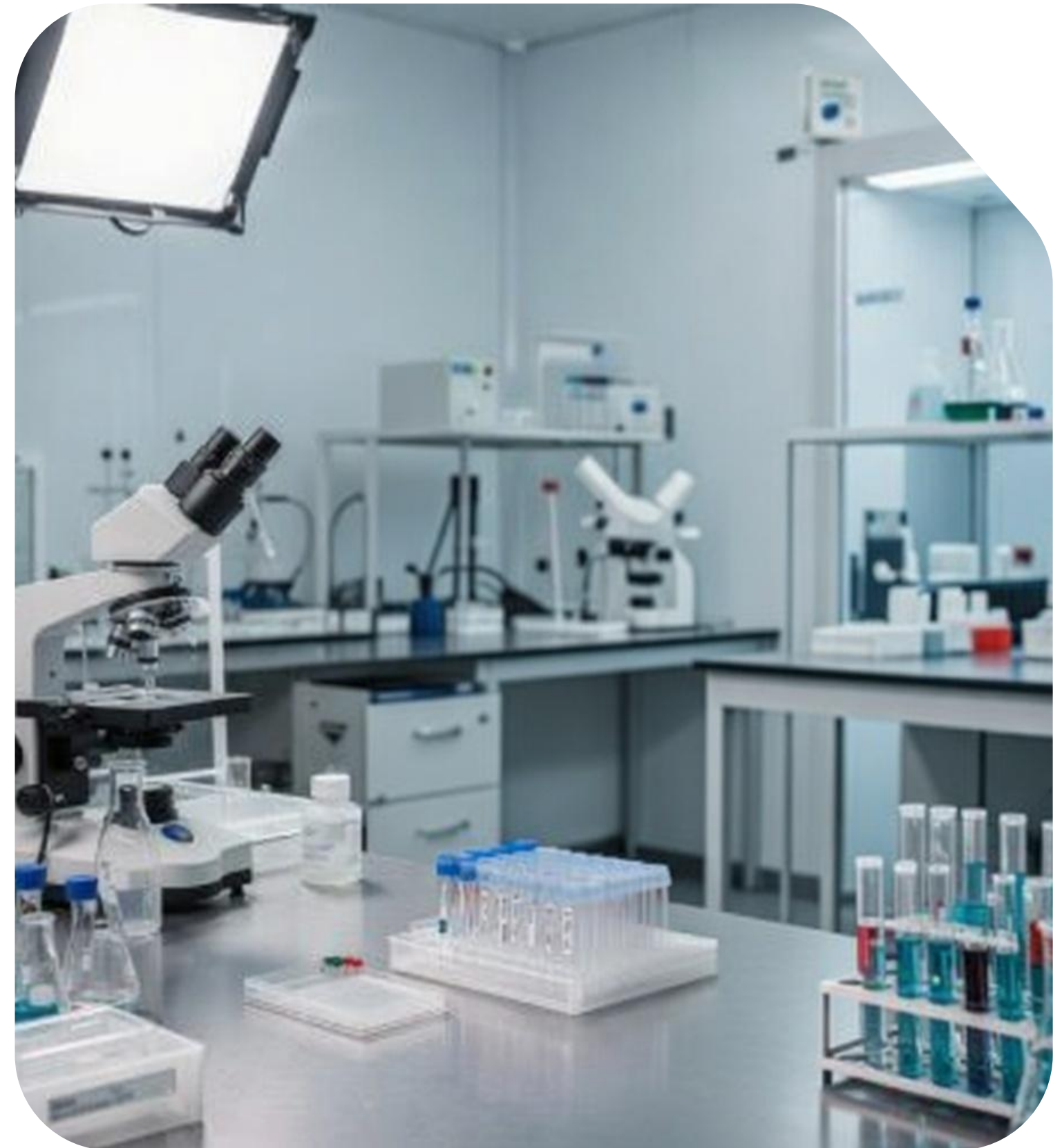
Annual Production Capacity

# Commitment to Quality

## Ensuring Excellence in Every Batch

Our rigorous quality control processes ensure that every product meets the highest industry standards, providing clients with confidence in our co-packing solutions and delivery timelines.

- Certified by the National Animal Supplement Council (NASC)
- FDA Registered Food Facility
- Manufacturer of Pet Grooming Aids following established good manufacturing practices (GMP)



# Co-Packing Capability & Capacity Overview

	Line 1	Line 2	Line 3
<b>Current Product Types</b>	32 oz Sprayer/Cap - Shrink Sleeve 20 oz Round/Cap - Shrink Sleeve 32 oz Round/Cap - Shrink Sleeve	32 oz Sprayer/Cap - Shrink Sleeve	1-gallon Jug - Wrap Label - Cap 1-gallon Square Jug - F/B Label-Cap 96 oz Jug - Wrap Label - Cap 32 oz Square Bottle F/B Label - Cap / Sprayer 32 oz Round bottle - wrap label - Sprayer 16 oz Round - Wrap Label - Cap/Sprayer 12 oz Round - Wrap Label - Cap/Sprayer 8 oz Round - Wrap Label - Cap Sprayer 5 oz Round - Wrap Label - Cap/Sprayer Wipes Canister - Wrap Label - Cap
<b>Line Capabilities</b>	8oz - 32oz	8oz - 32oz	All types of Wipes, 5oz - 128oz
<b>Auto capper</b>	Yes	No	Yes
<b>Label/Sleeve</b>	Can only run Shrink Sleeves	Can only run Shrink Sleeves	Can run F/B & Wrap Labels
<b>Seal Type</b>	Induction Seal Capable	N/A	Induction Seal Capable
<b>Line Speed</b>	55 BPM	48 BPM	19-40 BPM
<b>Annual Capacity (Bottles/Units)</b>	10,659,000 Bottles	9,302,000 Bottles	7,000,000+ Bottles / Canister (Mix Dependent)
<b>Available Capacity</b>	<b>60%</b>	<b>25%+</b>	<b>70%</b>



# Co-Packing Capability & Capacity Overview

	K1	K2	K4
<b>Current Product Types</b>	8 oz Round - Wrap Label - Cap/Sprayer 12 oz Round - Wrap Label 12 oz Oval - Shrink Sleeve - Cap/Sprayer 16 oz Round - Wrap Label - Cap/Sprayer 20 oz Oval - Shrink Sleeve - Cap/Sprayer 32 oz Round - Shrink Sleeve - Cap/Sprayer	4 oz Round - Wrap Label - Cap/Sprayer 4 oz Oval - Wrap Label - Cap/Sprayer Finger Wipe Canister F/B Label - Cap 8 oz. Round - Wrap Label - Cap/Sprayer 12 oz Round - Wrap Label - Cap/Sprayer 12 oz Oval - Shrink Sleeve - Cap/Sprayer 16 oz Round - Wrap Label - Cap/Sprayer 20 oz Oval - Shrink Sleeve - Cap/Sprayer	Wipes Canister - Wrap 8oz - Wrap - Cap 12oz - Wrap - Cap
<b>Line Capabilities</b>	8oz – 32oz	Finger Wipes, 4oz – 32oz	All Types of Wipes, 4oz – 128oz
<b>Auto capper</b>	Yes	Yes	Yes
<b>Label/Sleeve</b>	Capable of running Shrink Sleeves, F/B Label and Wrap Label	Capable of running Shrink Sleeves, F/B Label and Wrap Label	Can only run wrap label
<b>Seal Type</b>	Induction Seal Capable	Induction Seal Capable	Induction Seal Capable
<b>Line Speed</b>	22 – 36 BPM	22 – 36 BPM	12 – 16 BPM
<b>Annual Capacity (Bottles/Units)</b>	6,000,000+ Bottles (Mix Dependent)	6,000,000+ Bottles (Mix Dependent)	2,800,000+ Canisters (Mix Dependent)
<b>Available Capacity</b>	<b>75%</b>	<b>75%</b>	<b>50%</b>



# Contact Us :



**compana**™

**PET BRANDS**

*we nurture what you love*



## **Co-Packing Contact**

Gary Thomas

Chief Supply Chain & International Sales Officer



## **Email**

[gthomas@companapetbrands.com](mailto:gthomas@companapetbrands.com)



## **Phone**

724-814-2649



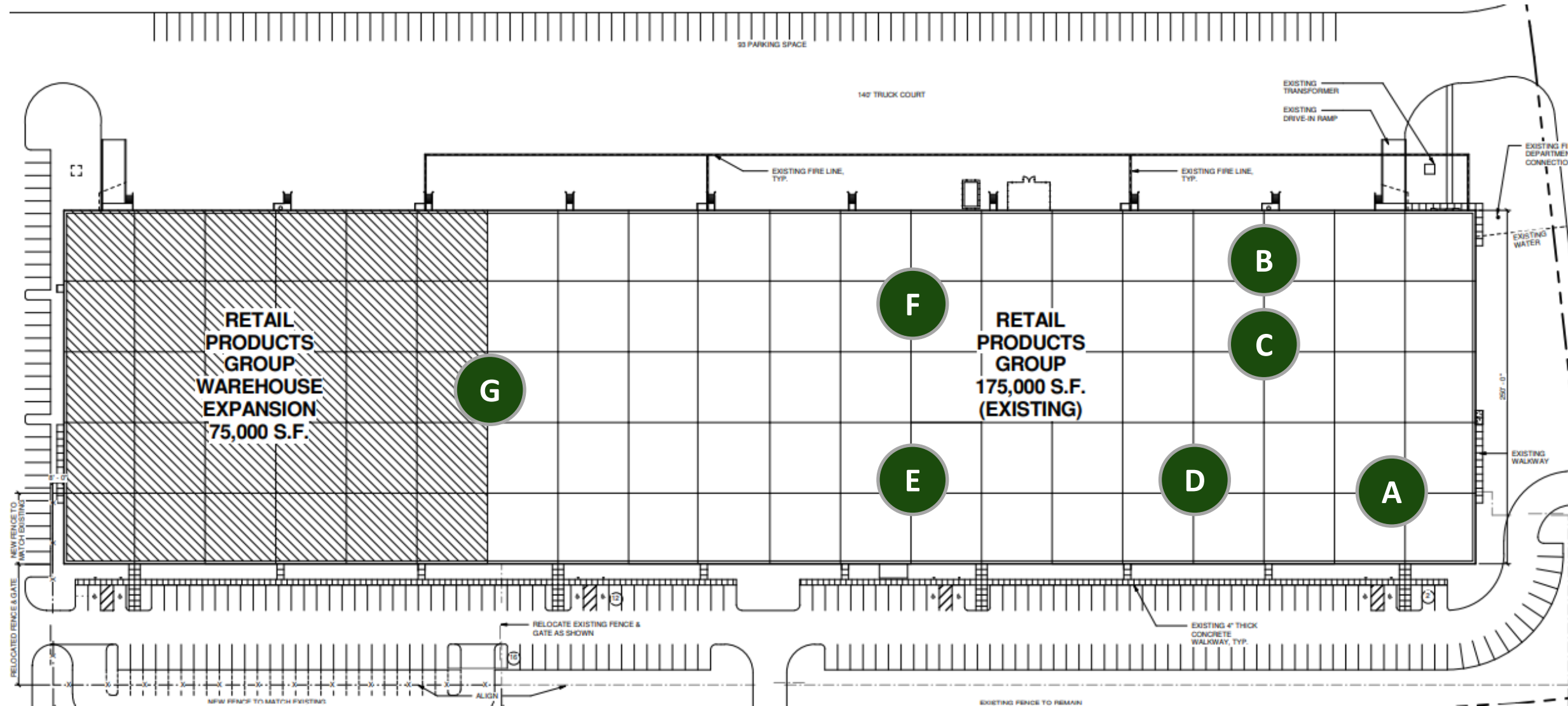
## **Website**

[Companapetbrands.com](http://Companapetbrands.com)



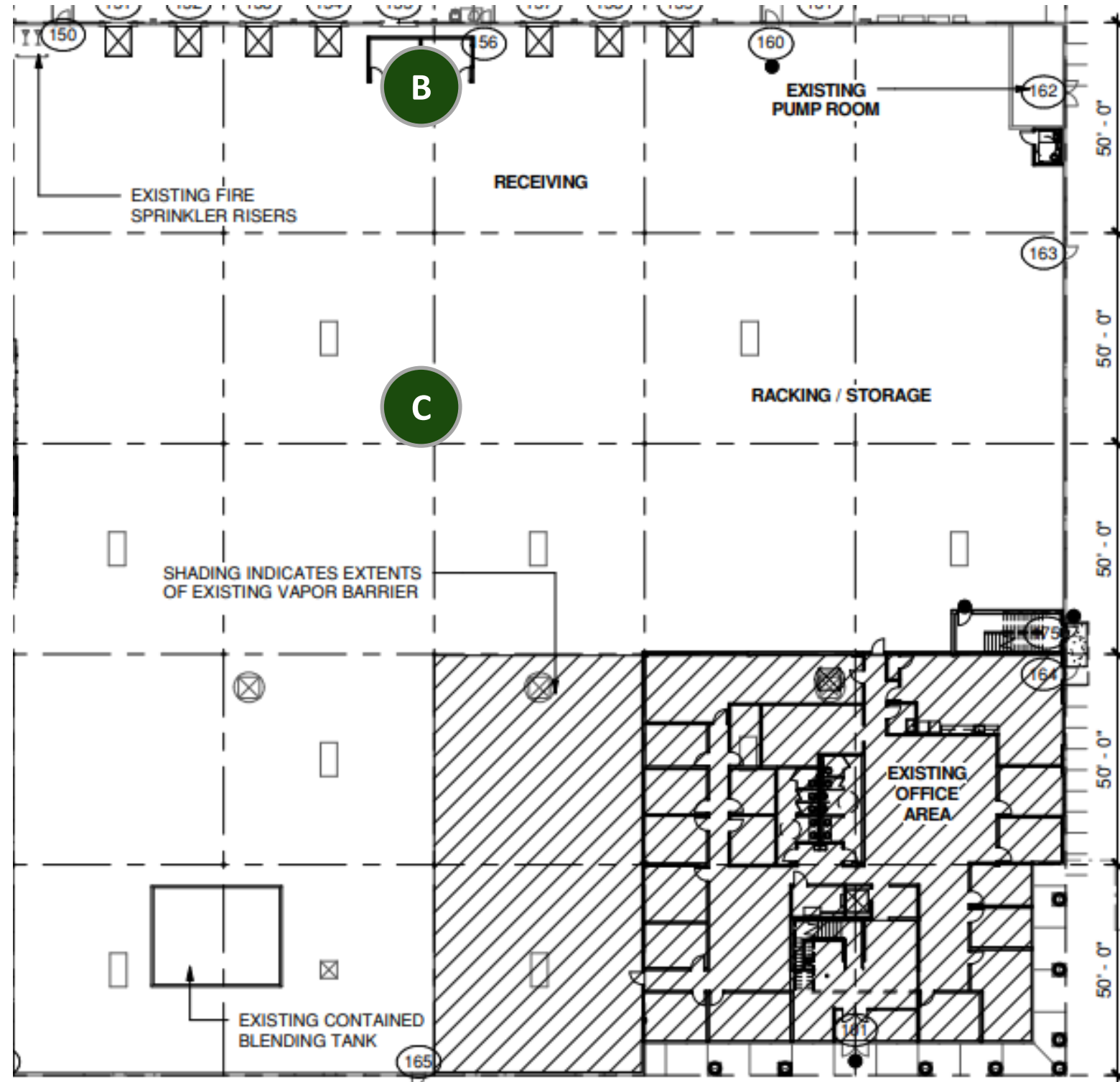
# BACKUP

# Site Overview



- A** Office Space
- B** Receiving Dock
- C** Warehouse – Raw Materials
- D** Solution Mixing
- E** Bottling Area
- F** Value-Add Services Area
- G** Warehouse – Finished Goods

# Site Overview



## B Receiving Dock

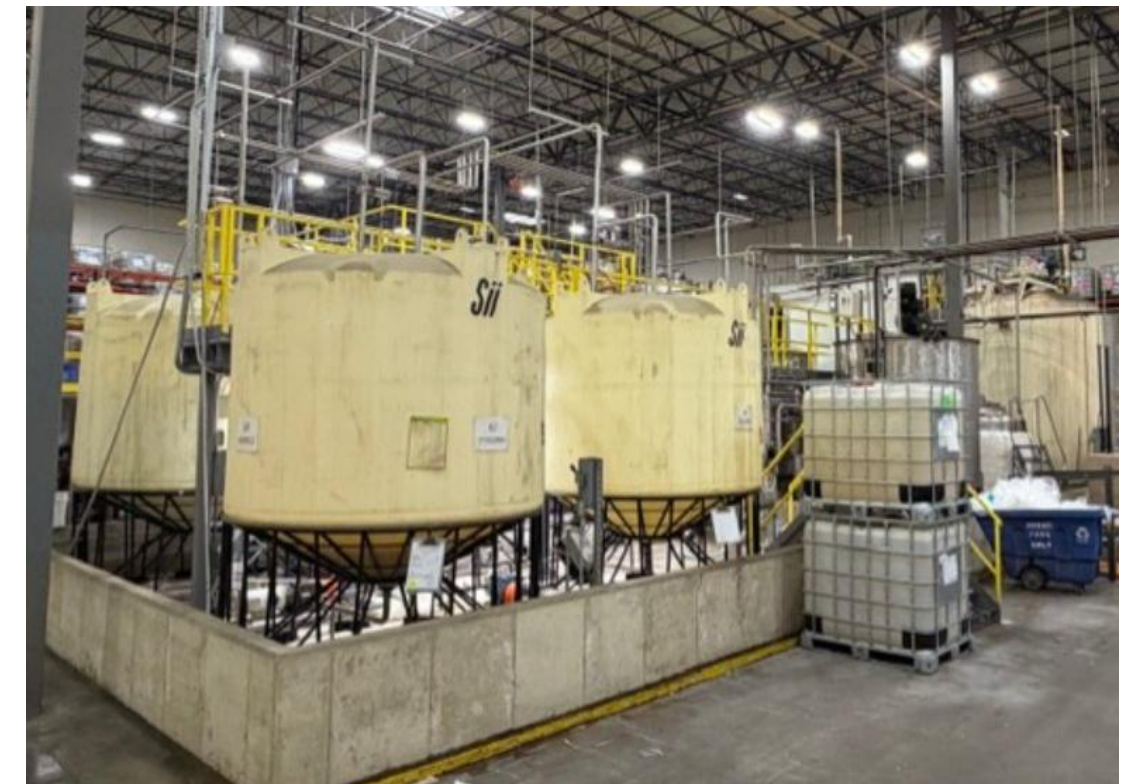
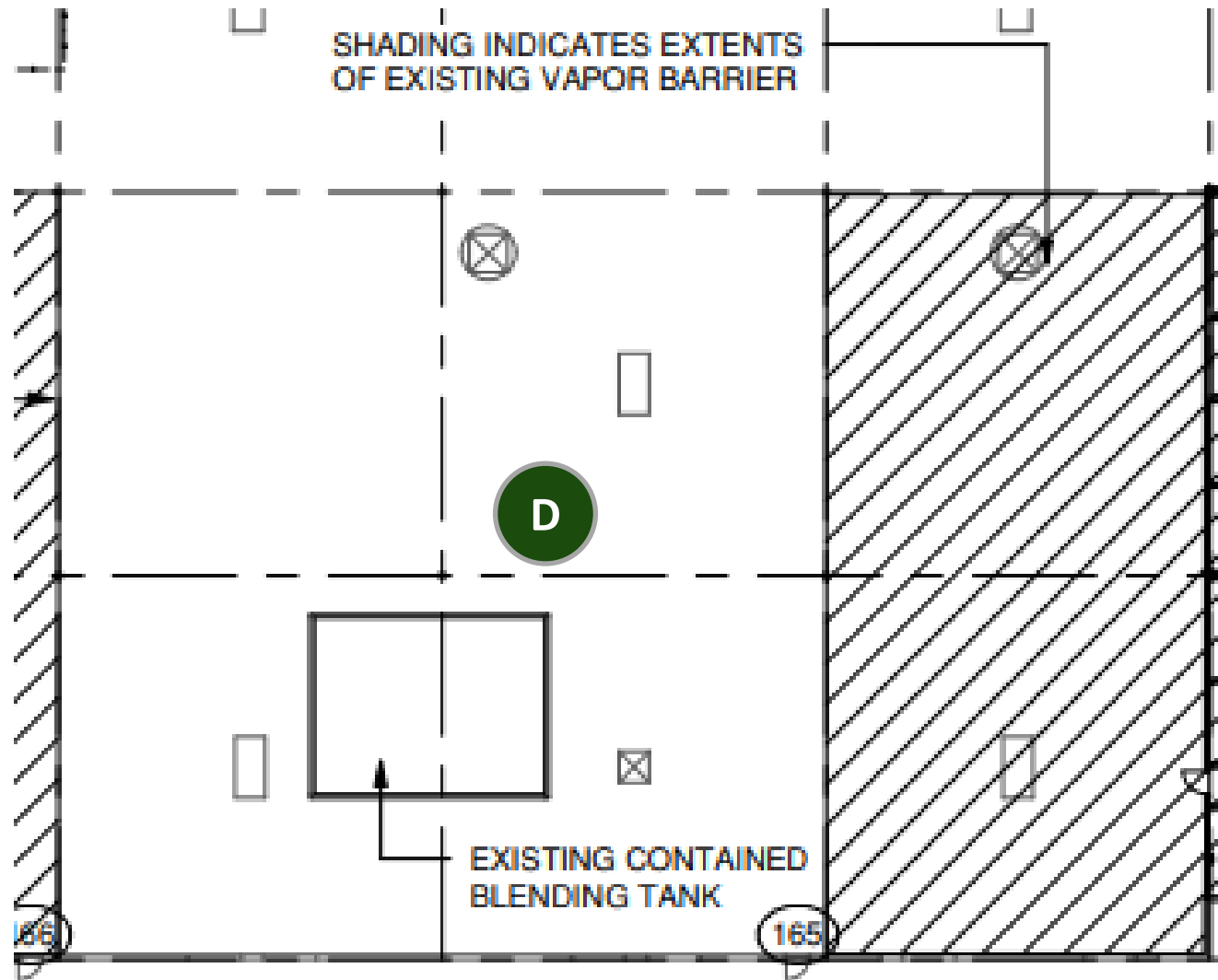


## C Warehouse – Raw Materials



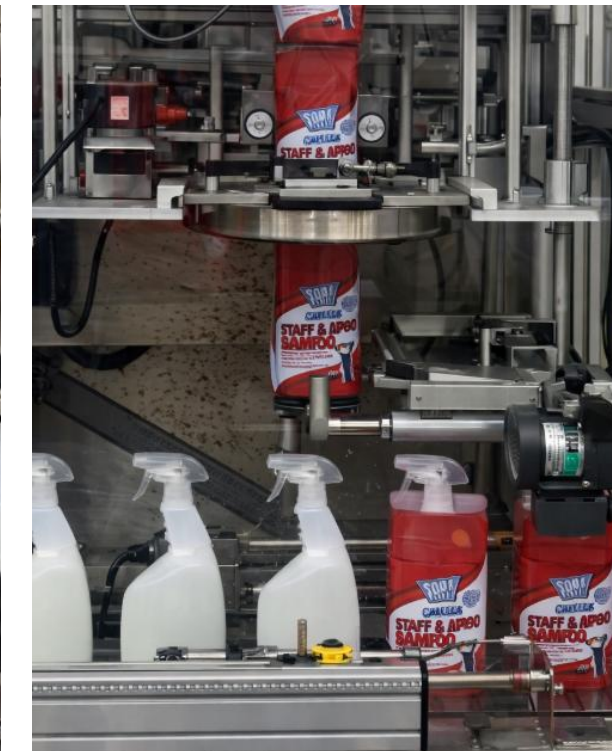
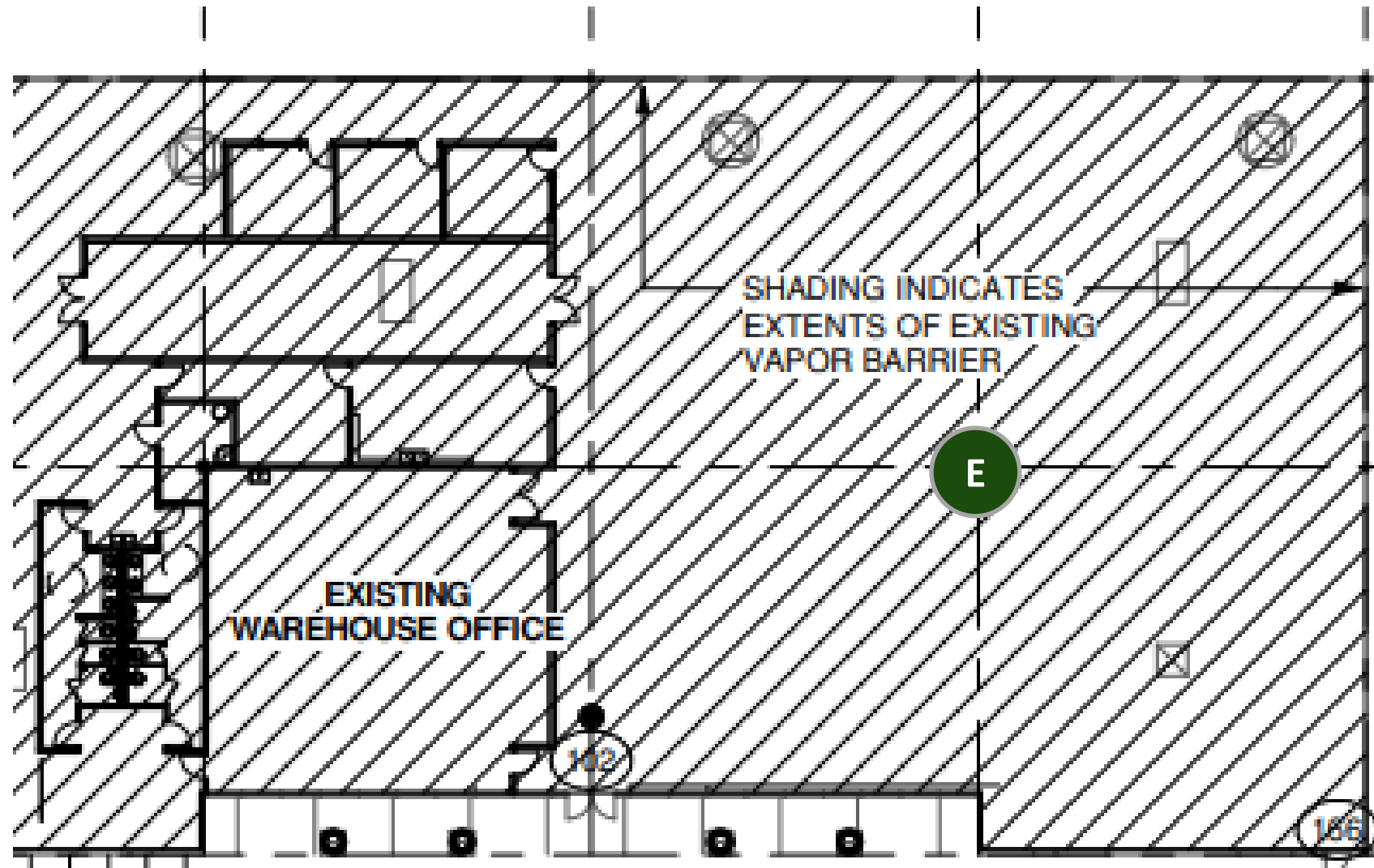
# Site Overview

## D Solution Mixing & Prep



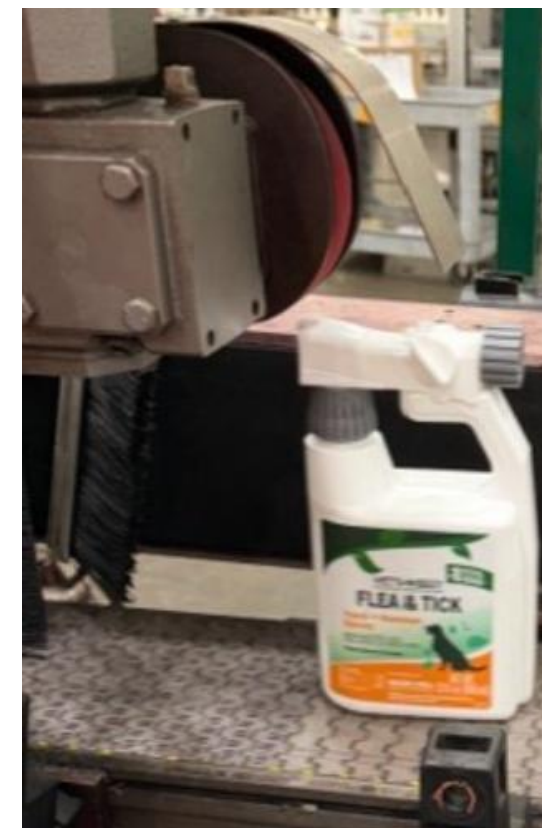
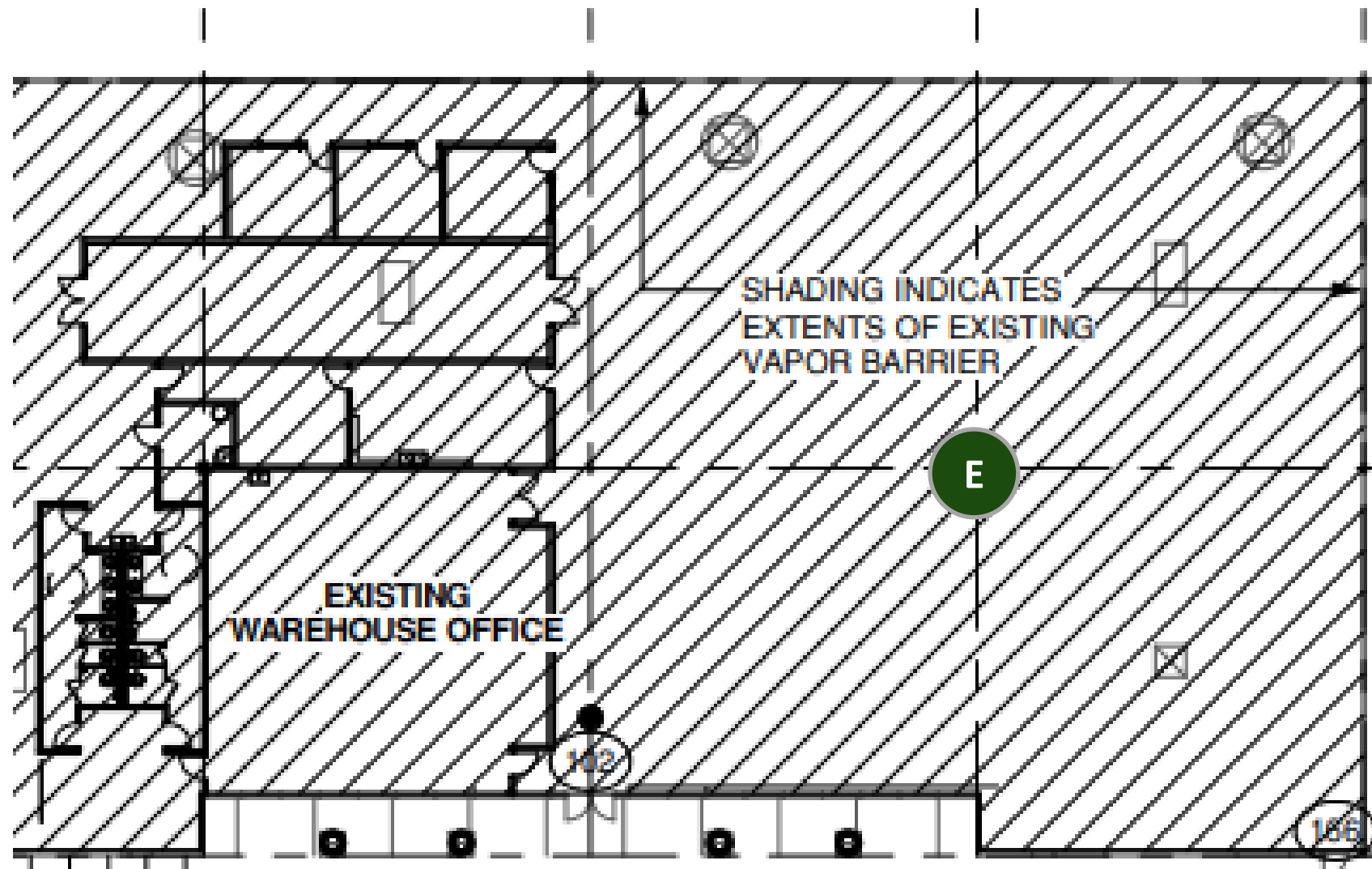
# Site Overview

## **E** Bottling Area – Blow Down Shrink Wrap



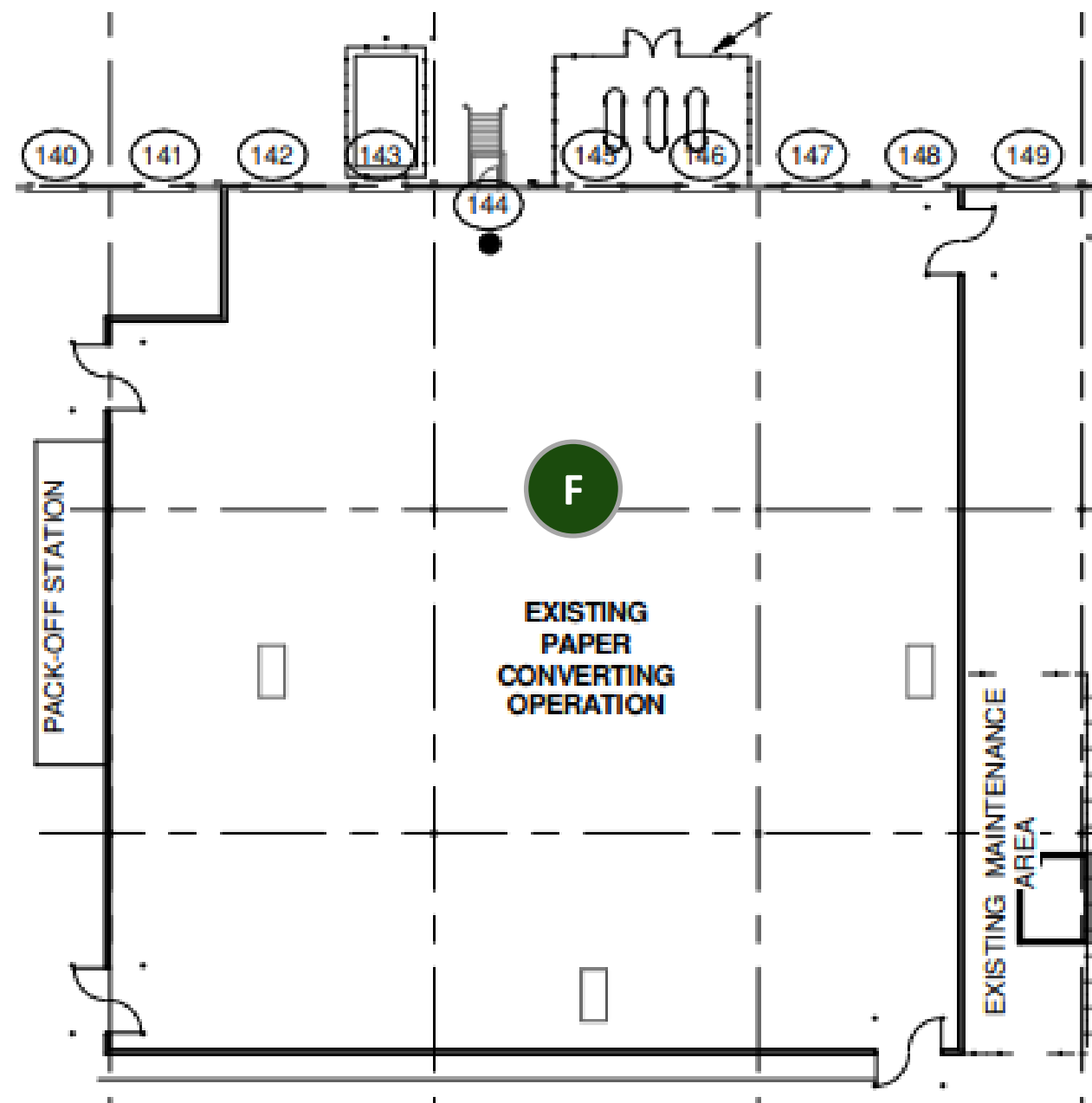
# Site Overview

## E Bottling Area – Placement Label



# Site Overview

## F Value-Add Services



# Site Overview

## G Warehouse – Finished Goods

